

FDA COMPLIANT STANDARD AND CUSTOM MPG SANITARY GASKETS

NCS Series 40MPG and 42MPG

40MPG and 42MPG sanitary gaskets can be made using materials that comply with FDA 21 CFR 177.1550 and USP class VI testing protocol. Virgin PTFE and PTFE compounds designed for metal detectability, X-ray detectability and anti-static available.

40MPG and 42MPG are used widely in food, dairy, beverage, biotech, pharmaceutical and all other sanitary process industries to seal tri-clamp connections in sanitary pipe lines. 40MPG and 42MPG custom profiles and sizes available upon request.

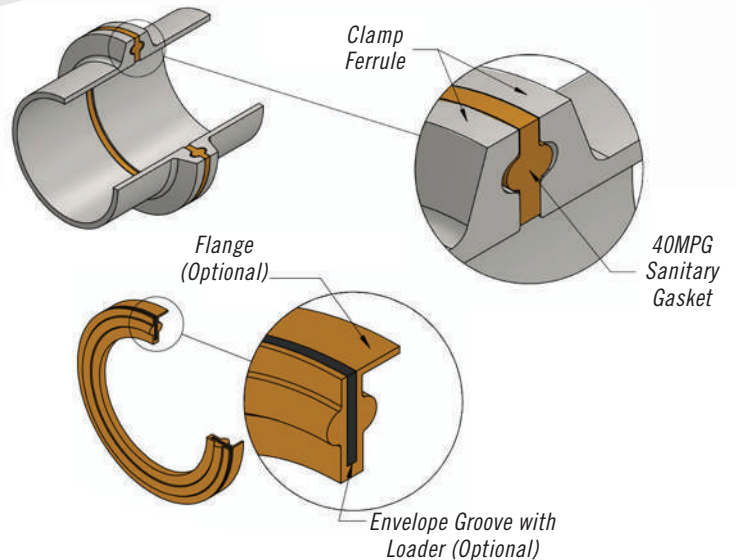
Advantages:

- Ideal for CIP/SIP Applications
- Chemically Inert
- Wide Temperature Range

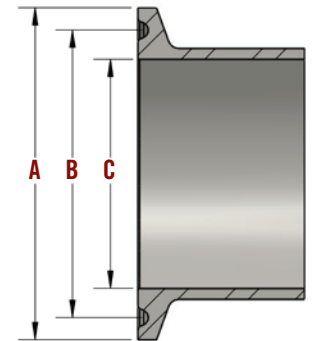
Series 40MPG: Envelope Groove (Optional) ~ Benefit from the chemical/thermal resistance from the PTFE and the elastomeric characteristics of EPDM or FKM. Flange (Optional) ~ A flange can be added to the part to help aid in installation.

Series 42MPG: O-ring Groove (Optional) ~ For additional sealability to ensure no leakage into the environment, an optional o-ring is added to the gasket.

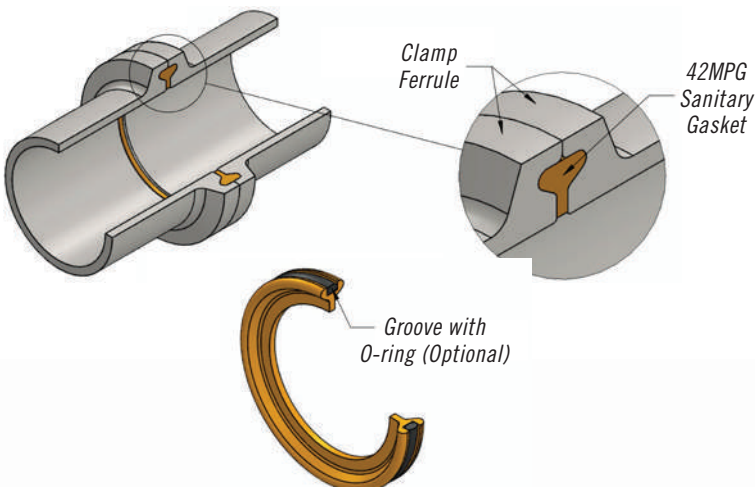
SERIES 40MPG



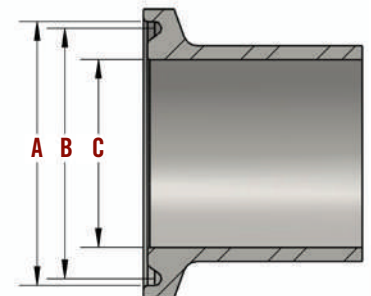
Size	Flange Dia.(A)	Bead Groove Dia.(B)	I.D. Bore(C)
0100	1.984	1.718	0.870
0150	1.984	1.718	1.370
0200	2.516	2.218	1.870
0250	3.047	2.781	2.370
0300	3.579	3.281	2.870
0400	4.682	4.344	3.834
0600	6.562	6.156	5.782
0800	8.602	8.156	7.782
1000	10.570	10.156	9.760
1200	12.570	12.156	11.760



SERIES 42MPG



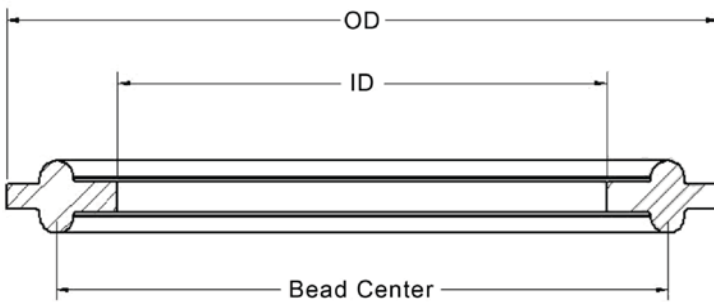
Size	Flange Dia.(A)	Bead Groove Dia.(B)	I.D. Bore(C)
0050	0.862	0.800	0.370
0075	0.862	0.800	0.620



Groove dimensions vary by manufacturer. Contact North Coast Seal for more information.

CUSTOMIZED GASKETS FOR CLAMPED PIPELINE CONNECTIONS

NCS Tri-Clamp Gaskets are available in a number of 70 durometer medical, dairy and food grade materials. Standard Polymers include Silicone, Fluoroelastomer, Nitrile EPDM and even Perfluoroelastomer. Specialty materials can also be manufactured from most of our 20 polymers in durometers ranging from 15 to 95 (depending on polymer). X-Ray and Metal detectable compounds are available too.



NOMINAL SEAL DIMENSIONS

Mold ID	Size*	Gasket ID	Gasket OD	Bead Center
999-500	1/2"	3/8"	1"	.802"
999-750	3/4"	5/8"	1"	.811"
999-1.000	1"	7/8"	2"	1.718"
999-1.500	1 1/2"	1 3/8"	2"	1.718"
999-2.000	2"	1 7/8"	2 1/2"	2.218"
999-2.500	2 1/2"	2 3/8"	3"	2.781"
999-3.000	3"	2 7/8"	3 1/2"	3.281"
999-4.000	4"	3 7/8"	4 1/2"	4.344"
999-5.000	5"	4 3/4"	5 1/2"	5.281"
999-6.000	6"	5 3/4"	6 1/2"	6.176"

**Size corresponds with nominal tubing OD.
Please contact NCS for sizes not listed.*

X-RAY INSPECTABLE / METAL DETECTABLE COMPOUNDS

The FDA Food Safety Modernization Act (FSMA) mandated standards to practice food safety prevention in processing. This created a rise in in-process X-ray inspections and a demand for sealing compounds. NCS's development team successfully implemented NCS 66, NCS E4 and NCS E5 to help processors comply with these new standards.

NCS 66 (316L Stainless steel filled PTFE)

- Typically used -320°F to 550°F
- Seals long term without re-tightening
- Metal detectable (magnetic)
- X-ray inspectable
- Color: Gray

NCS E4 (Stainless steel filled PTFE with additional anti-static and X-ray detectable additive)

- Typically used -320°F to 550°F
- Seals long term without re-tightening
- Metal detectable (magnetic)
- Additional X-ray inspectable additive
- Conductive for anti-static apps
- Color: Black

NCS E5 (Stainless steel filled PTFE with additional X-ray detectable additive)

- Typically used -320°F to 550°F
- Seals long term without re-tightening
- Metal detectable (magnetic)
- Additional X-ray inspectable additive
- Color: Blue

